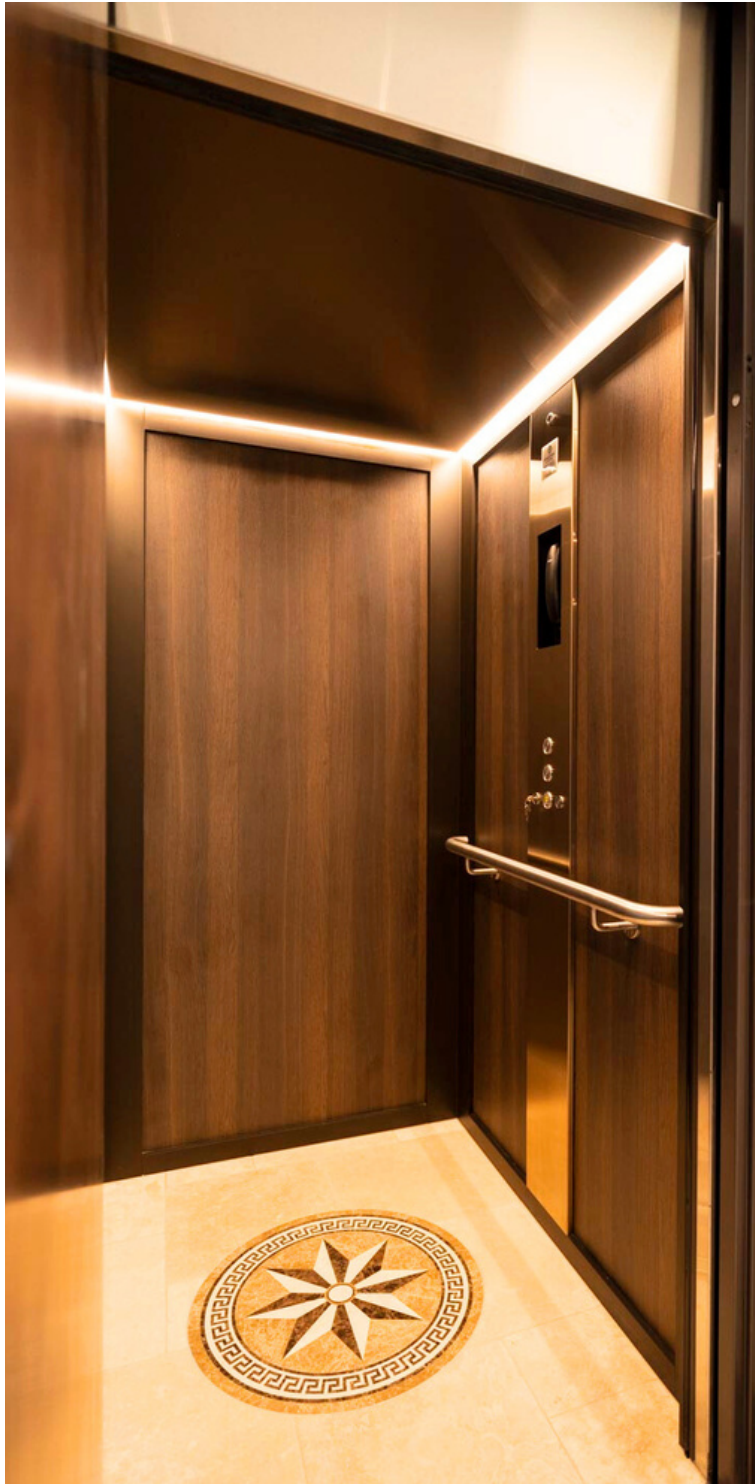




RESIDENTIAL | COMMERCIAL | DISABILITY | SERVICING



## PREVENTATIVE MAINTENANCE

AVOID UNTIMELY BREAKDOWNS

### 24/7 PHONE SUPPORT

To help you with all your questions

### PROTECT YOUR ASSETS

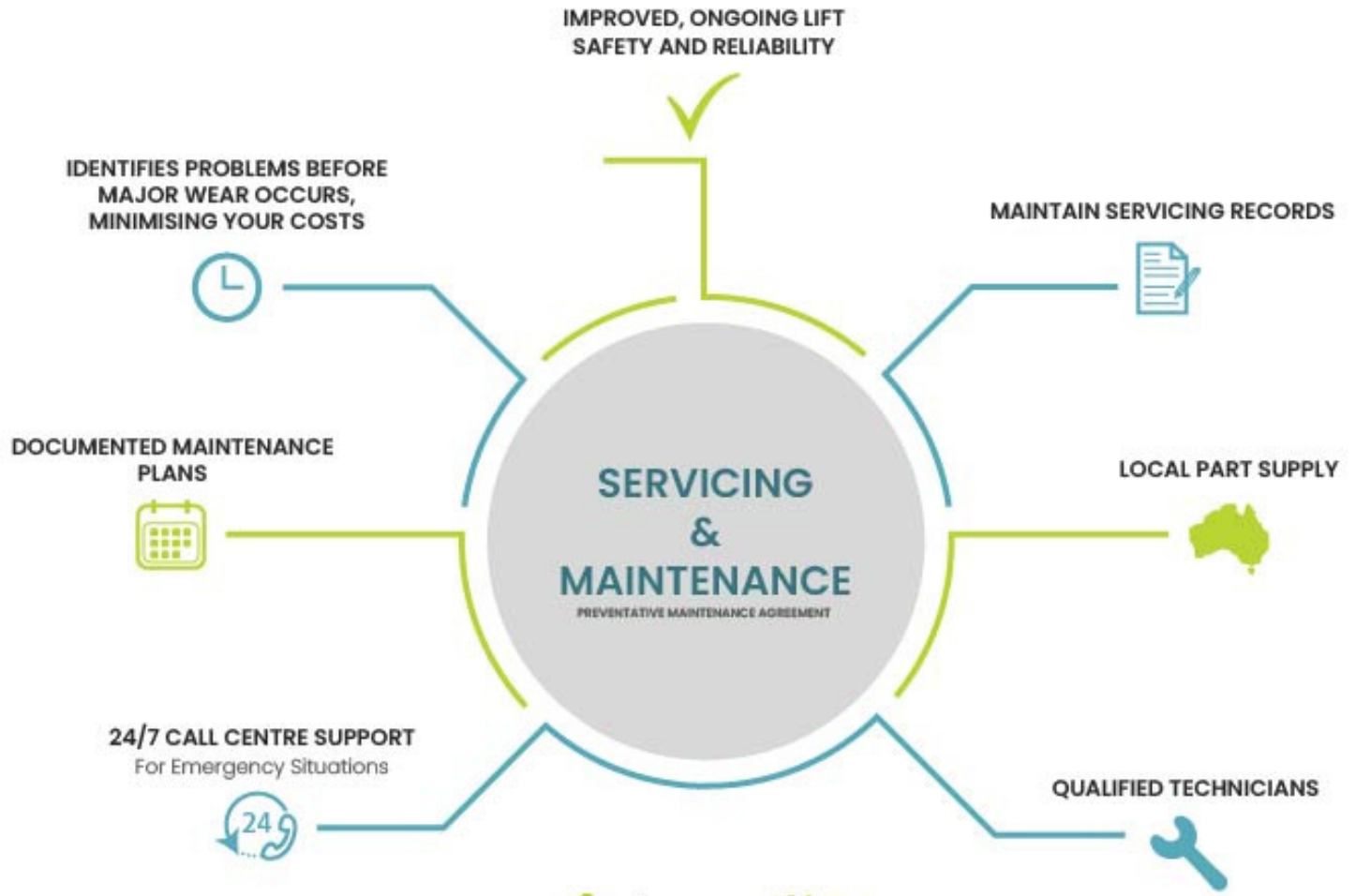
Achieve their maximum life usage

### FLEXIBLE AGREEMENTS

1 to 12 services per year

# WHY A PREVENTATIVE MAINTENANCE AGREEMENT (PMA)?

Your equipment is just like a car, it must be serviced to maintain any manufacturer's warranty on newly purchased equipment and also to ensure a duty of care for the ongoing safe operation for all users and stakeholders.



## Important factors you should be aware of when considering servicing of your lift

All lifts require specialised servicing and maintenance. Our agreements include a set number of calls over a 12-month period, which will include a documented service checklist of inspection and safety checks.

Minimum Standards exist for regular maintenance of lifts in Australia. Contact your Shotton Lifts consultant for more information. Shotton Lifts provides service maintenance plans designed to optimise serviceability and life of your lift.



# WHAT WE OFFER

## Safety checks significantly reduce the chance of injury

If supplied by Shotton Lifts Australia, your lift will have been supplied to you at the highest quality to meet Australian Safety standards. Over time, there is a chance that integral parts will deteriorate if not serviced and maintained as required. As part of our standard service, a list of safety checks is carried out that are designed to find potential faults.

## All our service plans are tailored individually for every client

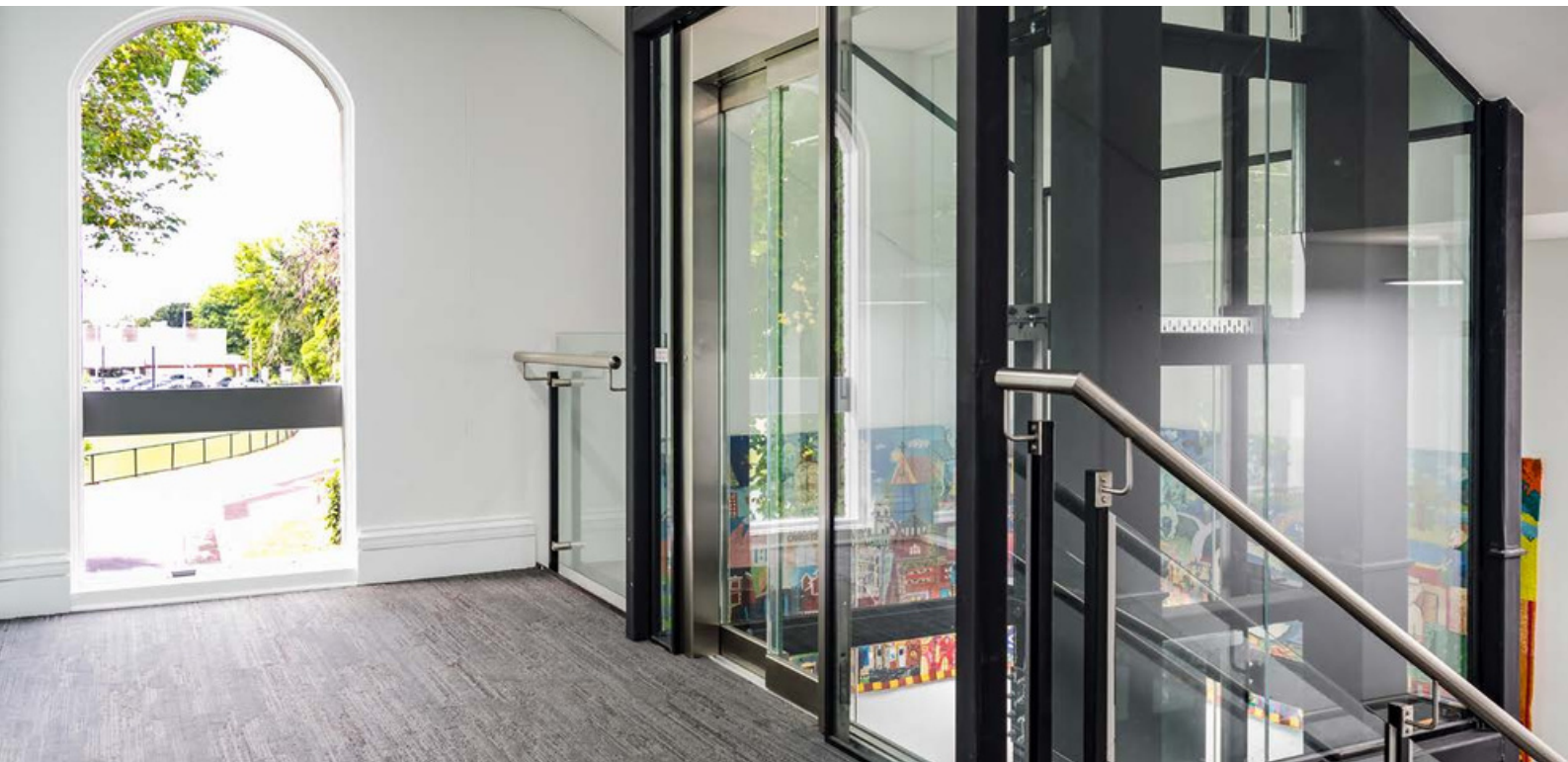
Nearly every lift has different usage and situations, which can significantly vary the level of service and safety check requirements. We take all these things into consideration when developing your tailored service agreement, removing any unnecessary costs and wasted time.

## Peace of mind

After each service, a detailed report is issued to advise you of the overall condition of the lift and, as time goes on, any parts that are likely to need replacement or repair for future services. If our technician feels that the issue needs to be rectified immediately, be assured that it must be essential and well worth getting it fixed immediately.

## Convenience

As part of programmed servicing, we notify you of when each service is due and will arrange a convenient time to carry out the work. We have worked very hard to ensure that what we offer to you is real value for money.



## KEEP YOUR LIFT OPERATION SAFE WITH US

### PEACE OF MIND

Tailored and customised maintenance agreements available to suit your needs.

### PROTECT YOUR ASSETS

Achieve their maximum life usage and efficiency.

**CONTACT US FOR A FREE QUOTE**

03 8725 1025 [service@shottonlifts.com.au](mailto:service@shottonlifts.com.au)





LIFTS FOR YOUR LIFESTYLE. CUSTOM MANUFACTURED LIFT INTERIORS



Shotton Lifts design, engineer, manufacture, sell, install and service the lifts, locally, in Australia. Dealing direct means your needs are communicated directly back to the engineers and factory floor ensuring your lift is delivered on time, to your specification and meets local regulatory requirements and safety standards. Installation onsite is carried out by Shotton Lifts and, rest assured, Shotton Lifts will be there years after to service and maintain your lift.

*DISCLAIMER: Specifications may change at any time without prior notice. Please consult your Shotton Lifts Sales Consultant for up to date information on products. Products displayed in this brochure are available at the time of printing of this brochure. New products may replace the products in this brochure.*

VISIT [WWW.SHOTTONLIFTS.COM.AU](http://WWW.SHOTTONLIFTS.COM.AU) FOR SHOTTON LIFTS' SERVICE AND MAINTENANCE TERMS AND CONDITIONS

## Victoria Sales Office & Showroom

Unit 3, 147 Greens Road Dandenong South VIC 3175

Phone: 03 8725 1025

Email Sales: [sales@shottonlifts.com.au](mailto:sales@shottonlifts.com.au)

Email Service: [service@shottonlifts.com.au](mailto:service@shottonlifts.com.au)

## Head Office & Manufacturing

139-145 Greens Road Dandenong South VIC 3175

## Queensland Sales Office

21 -26 Octal Street Yatala QLD 4207

Phone: 1800 QLD LIFTS

Mobile: 0488 498 474

Email Sales: [sales@shottonlifts.com.au](mailto:sales@shottonlifts.com.au)

Email Service: [service@shottonlifts.com.au](mailto:service@shottonlifts.com.au)

**SHOTTON LIFTS**

A division of Shotton Group Pty Ltd

[www.shottonlifts.com.au](http://www.shottonlifts.com.au)



FS 605209

Management System  
Certified to ISO 9001

MANUFACTURING SINCE 1977 | WE BUILD LIFTS THAT LAST | MANUFACTURED IN AUSTRALIA