



RESIDENTIAL ELEVATORS | MANUFACTURED IN AUSTRALIA







# intelligent design **PRODUCT RANGE**

Shotton Lifts' designs allow you to create a lift to suit your needs, taste and performance requirements. A product that truly represents solutions for lifestyle.

Lifts to suit homes, townhouses, offices, factories and multiple uses requiring multi-level accessibility. Shotton Lifts' are designed to last, providing you a safe, reliable and stylish product for your dwelling or workplace. When you choose to buy local, you have control over your lift project from start to finish.

**Gaurav**  
★★★★★

"The company was very professional and was suitable for what I was specifically looking for. We utilised Shotton Lifts in our past developments and were very satisfied with the services."

*Testimonial*

**Fran**  
★★★★★

"We're very pleased with the product and choices on offer, and we're extremely happy with the final product. We would highly recommend Shotton Lifts to anyone in our network."

*Testimonial*

**Matt**  
★★★★★

"Install was very easy from the get go. Love working with you guys, everything is so streamlined and easy for us."

*Testimonial*

Our Banksia and Balmoral residential elevators, along with our Alpine commercial lift, have undergone full upgrades using the latest computer modelling, technology and testing at our manufacturing plant in Dandenong South, Victoria. Our new designs deliver a superior product range with their engineered features, performance and elegant styling.

With an ongoing commitment in constantly refining our lift products and offering unparalleled service, make Australian-made, Shotton Lifts your first choice in elevators.

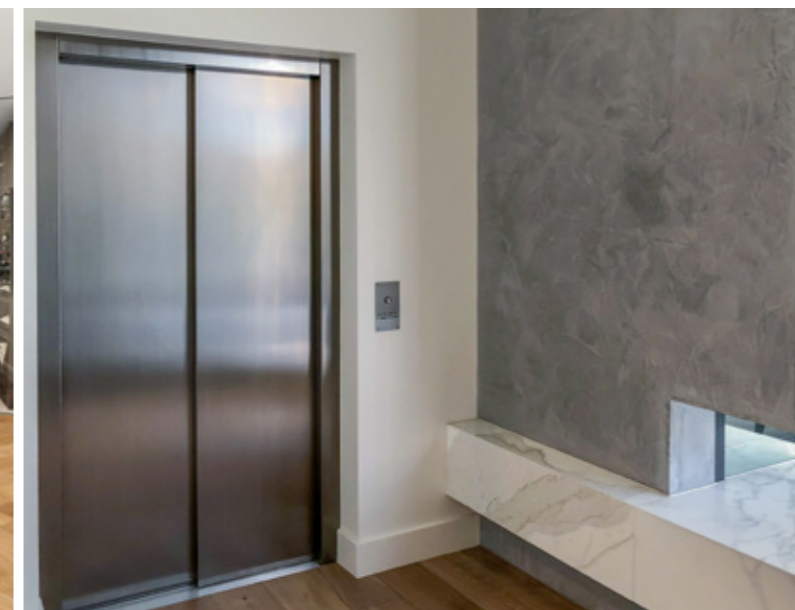
**BANKSIA COMPACT**  
- Home -



**BANKSIA**  
- Home -



**BALMORAL**  
- Home -



**ALPINE**  
- Commercial -







# BANKSIA COMPACT

Perfectly suited for demands of a smaller footprint.

The Banksia Compact, draws its design from the highly popular Banksia lift and was specifically developed as a solution to meet smaller footprints. Like the mainstay Banksia version, the Banksia Compact also meets the full requirements of a practical and functional lift for either new or existing residential homes.

Our design options provide an extensive choice of colours, textures and finishes to ensure that your lift interior is an architectural feature of your home and is a very practical addition in assisting you to move yourself freely between levels.

The Banksia Compact can also utilise our engineered tower option, which is ideal for residential applications where concrete or steel engineered lift voids are not practical or available and with the tower's bolt together design, means that in most cases, the lift can be delivered through a standard size doorway.

*(Some other access requirements and conditions apply)*

**Why move? A Banksia Lift can be installed to take the effort out of accessing the upper storeys of your home.**

## Banksia Features

- Local Australian engineering for safety and comfort
- Aesthetic styling to match your taste in design
- Standard design (customisation is available)
- Engineered Tower or Towerless Models available
- Flush mount telephone (Auto-Dial optional)
- New rail guide slide design for smooth ride
- Designed for easy Installation and maintenance
- Workcover design certification - lift and tower design

## Advantages

- Ability to stay longer in your home
- Ideal for maintaining accessibility to all levels
- No need for concrete lift void (towered version)
- Simplicity in design and installation.

<b>RATED LOAD (kg)</b>	240kg
<b>MAX TRAVEL</b>	10.3M
<b>NO OF STOPS</b>	4
<b>PIT DEPTHS</b>	200mm
<b>HEADROOM</b>	2700mm
<b>SPEED M/S</b>	0.3
<b>MOTOR/POWERSUPPLY</b>	32 AMPS /Single phase
<b>COMPLIANCE</b>	AS1735.18 Workcover Design Certified
<b>CAR TYPE</b>	Single Entry
<b>STANDARD LIFT INTERIOR</b>	Refer to interior specs (Pg 16)
<b>VOID SIZE (mm)</b>	Refer to well plan dimensions (Pg 24)

# BANKSIA

Shotton Lifts' most popular residential lift

Locally built, the Banksia meets all the needs for a practical and functional solution for new or existing residential dwellings.

Design options provide an extensive choice of colours, textures and finishes to ensure your lift interior is an architectural feature of your home and a very practical addition to assist you move yourself and your shopping from the garage to the kitchen.

The engineered tower option is ideal for residential applications where concrete or steel engineered lift voids are not practical and its bolt together design means in most cases the lift can be delivered through a normal doorway.

*(Some other access requirements and conditions apply).*

**Why move? A Banksia Lift can be installed to take the effort out of accessing the upper storeys of your home.**

## Banksia Features

- Local Australian engineering for safety and comfort
- Aesthetic styling to match your taste in design
- Standard design (customisation is available)
- Engineered Tower or Towerless Models available
- Flush mount telephone (Auto-Dial optional)
- New rail guide slide design for smooth ride
- Designed for easy Installation and maintenance
- Workcover design certification - lift and tower design

## Advantages

- Ability to stay longer in your home
- Ideal for maintaining accessibility to all levels
- No need for concrete lift void (towered version)
- Simplicity in design and installation

<b>RATED LOAD (kg)</b>	240kg, 320kg and 408kg
<b>MAX TRAVEL</b>	10.3M
<b>NO OF STOPS</b>	4
<b>PIT DEPTHS</b>	200mm
<b>HEADROOM</b>	2700mm
<b>SPEED M/S</b>	0.3
<b>MOTOR/POWERSUPPLY</b>	32 AMPS /Single phase 25 AMPS / 3 Phase
<b>COMPLIANCE</b>	AS1735.18 Workcover Design Certified
<b>CAR TYPE</b>	Single Entry, Through, Corner
<b>STANDARD LIFT INTERIOR</b>	Refer to interior specs (Pg 16)
<b>VOID SIZE (mm)</b>	Refer to well plan dimensions (Pg 24)







# BALMORAL

The home lift that gives you more

Stainless Steel or Glass (option) auto doors are just the thing for the home adding a distinctive quality feature and provide the easiest automated method of accessing a lift. This means it is Ideal for wheelchair applications.

The Balmoral has the same qualities as the Banksia lift with the addition of Auto Sliding Doors.

The standard car size available is 1100mm x 1400mm and other custom sizes are available to suit most applications.

It's the next step up in accessibility when choosing Shotton Lifts Balmoral Lift range. Stainless Steel finishes or Glass can add a level of sophistication and combined with our extensive range of interior finishes this is truly a prestigious addition to your home.

## Balmoral Features

- Local Australian engineering for safety and comfort
- Aesthetic styling to match your taste in design
- Standard design (customisation is available)
- Engineered Tower or Towerless Models available
- Flush mount telephone (Auto-Dial optional)
- New rail guide slide design for smooth ride
- Designed for easy Installation and Maintenance
- Workcover design certification - lift and tower design

## Advantages

- Ability to stay longer in your home
- Ideal for maintaining accessibility to all levels
- No need for concrete lift void (towered version)
- Simplicity in design and installation

<b>RATED LOAD (kg)</b>	408 - 630 kg
<b>MAX TRAVEL</b>	10.3M
<b>NO OF STOPS</b>	4
<b>PIT DEPTHS</b>	200mm
<b>HEADROOM</b>	2700mm
<b>SPEED M/S</b>	0.3
<b>MOTOR/POWERSUPPLY</b>	25 AMPS / 3 Phase
<b>COMPLIANCE</b>	AS1735.18 Workcover Design Certified
<b>CAR TYPE</b>	Single Entry, Through, Corner
<b>STANDARD LIFT INTERIOR</b>	Refer to interior specs (Pg 16)
<b>VOID SIZE (mm)</b>	Refer to well plan dimensions (Pg 24)

# STANDARD TECHNICAL INCLUSIONS

Shotton Lifts have a wide range of inclusions for Standard & Custom - built lifts. As the manufacturer Safety is our primary focus and is integrated into our design certified by an independent engineer and registered with WorkSafe Victoria.

Information provided below including dimensions is a guide only and subject to change. Engineering drawings provided following placement of order should be used for all construction of Lift shaft and associated works.

Model inclusion	Detail	Banksia Compact	Banksia	Balmoral
<b>DRIVE UNIT TYPE</b>				
<b>Roped Hydraulic</b>	Up to 4 levels or 10.3 Metres travel (subject to site inspection & engineering review)	●	●	●
<b>RATED SPEED</b>	0.3 metres/second	●	●	●
<b>MAX FLOOR LEVELS</b>		4	4	4
<b>ENTRANCE CONFIGURATIONS</b>	See pages 24, 25 and 26 (Corner car subject to conditions)	Single	Single, Through, Corner	Single, Through, Corner
<b>LOAD CAPACITY (KG)</b>		240	240, 320, 408	630
<b>POWER</b>	From 2.9KW to 6KW. Single and Three phase. Check at time of ordering. 2.9KW available only in Single phase	Single Phase	Single or Three Phase	Three Phase
<b>LIFT CAR HEIGHT</b>	Internal floor to ceiling		2100 mm	
<b>LIFT CAR DIMENSIONS</b>	Standard	850x950	900x1300 1000 x 1300 1100 x 1400	1100 x 1400 other custom sizes available
<b>LIFT SHAFT DIMENSIONS</b>	See page 26 for sizes for towered and towerless (bolt to client wall)		As the manufacturer, Shotton Lifts can offer pricing on Custom lift car sizes. Please note some limitation exists in relation to regulations and practical engineering design of the lift	
<b>PIT DEPTH</b>	200mm	●	●	●
<b>OVERHEAD</b>	2700mm	●	●	●
<b>DOOR OPENING WIDTH</b>	Swing (Banksia) Auto Sliding (Others)	900	900	900
<b>DOOR OPENING HEIGHT</b>	Swing (Banksia) Auto Sliding (Others)	2000 (●) 2340 (○)	2000 (●) 2340 (○)	2000
For construction door cut-out sizes refer to Shotton Engineering drawings supplied prior to manufacture				
<b>HYDRAULIC HOSE</b>	From Cabinet to cylinder		Standard Allowance is 3 metres	

● Standard ○ Optional n/a Not Available

## TOWERED OR TOWERLESS?

We offer both engineered tower and structural wall mounted lifts, to suit your needs and budget.

## ENGINEERED TOWER

Towered version can greatly reduce building costs and time.



## TOWERLESS USING BRACKETS TO STRUCTURAL WALL

We fix to your engineered wall.



Model inclusion	Detail	Banksia Compact	Banksia	Balmoral
<b>AUTO SLIDING LANDING &amp; CAR DOORS</b>	Stainless Steel fire rated doors – RH/LH Sliding	n/a	n/a	●
	Centre opening – available with extended lead times	n/a	n/a	○
	Swing Doors – Timber	●	●	
<b>CAR OPERATING PANEL</b>	Main Car Operating Panel (COP)	●	●	●
	Auxiliary COP – ASI735.12	n/a	n/a	n/a
	Autodial telephone connected to GSM	○	○	○
	GSM Module with battery backup	●	●	●
	Dual illumination Buttons – in car and landings	○	○	○
	Park / Run, lighting Key locks in car	●	●	●
	Alarm push button	●	●	●
	Door open button	n/a	n/a	●
	<b>COMMUNICATION &amp; DISPLAYS REFER TO PAGE 23 FOR MORE DETAILS</b>			
<b>HANDRAIL (SEE PAGE 22 FOR DETAILS)</b>	Meets BCA E3.6	n/a	○	○
<b>2-D ELECTRONIC DOOR SAFETY LIGHT RAYS</b>	Obstructions into doorway while lift is moving will result in lift stopping. Restart again by pressing floor level button.	●	●	●
<b>EMERGENCY BATTERY BACKUP</b>	In case of a power failure lift will return to lower floor level	●	●	●
	In case of power failure lift car lighting will remain on for a defined period.	●	●	●
<b>CAR LIGHTING</b>	To ASI735 Lift Standards. 2 x downlights in all car sizes except 4 x for Large 1100 x 1400mm	●	●	●
	LED Downlights	●	●	●
	LED Strip Lighting	○	○	○
<b>EMERGENCY LOWERING DEVICE</b>	Operated by suitably trained person	●	●	●

● Standard ○ Optional n/a Not Available

# CAR TYPES

Single Entry



Banksia  
Banksia Compact  
Balmoral

Through Car



Banksia  
Balmoral

Corner Car



Banksia  
Balmoral

# STANDARD INTERIOR FINISH INCLUSIONS

Shotton Lifts Standard range of Car Interiors are suitable for both Residential and Commercial application requiring a functional design incorporating modern styling and durable surfaces for easy maintenance.

Our new design incorporates LED downlights with either a white or Stainless surround finish.

The new car construction is manufactured by Shotton Lifts using a durable and high strength 6061 Aluminum extrusion made in Australia.

Model inclusion	Detail	Banksia Compact	Banksia	Balmoral
<b>WALLS</b>				
<b>Skin Plate</b>	Available in Standard range of colours and finishes	●	●	●
<b>OR</b>				
<b>Stainless Steel</b>	Brushed finish	●	●	●
<b>CAR SURROUNDS &amp; PROFILES</b>				
<b>Skin Plate</b>	Available in Standard range of colours	●	●	●
<b>CONTROL OPERATING PANEL (COP) &amp; CEILING</b>				
<b>Stainless Steel</b>	Brushed finish	●	●	●
<b>OR</b>				
<b>Skin Plate</b>	Available in Standard range of colours	●	●	●
<b>CAR DOORS</b>				
	Semi Solid core timber MDF doors	●	●	n/a
	RH/LH Auto Sliding Brushed Stainless Steel Fire rated doors	n/a	n/a	●
<b>LANDING DOORS</b>				
	RH/LH Auto Sliding Brushed Stainless Steel Fire rated doors	n/a	n/a	●
<b>LIGHTING</b>				
	LED Downlights	●	●	●
<b>FLOORING BY CLIENT</b>				
	20mm standard allowance made for client flooring contractor	●	●	●
<b>HAND RAIL</b>				
		○	○	○

● Standard    ○ Optional    n/a Not Available

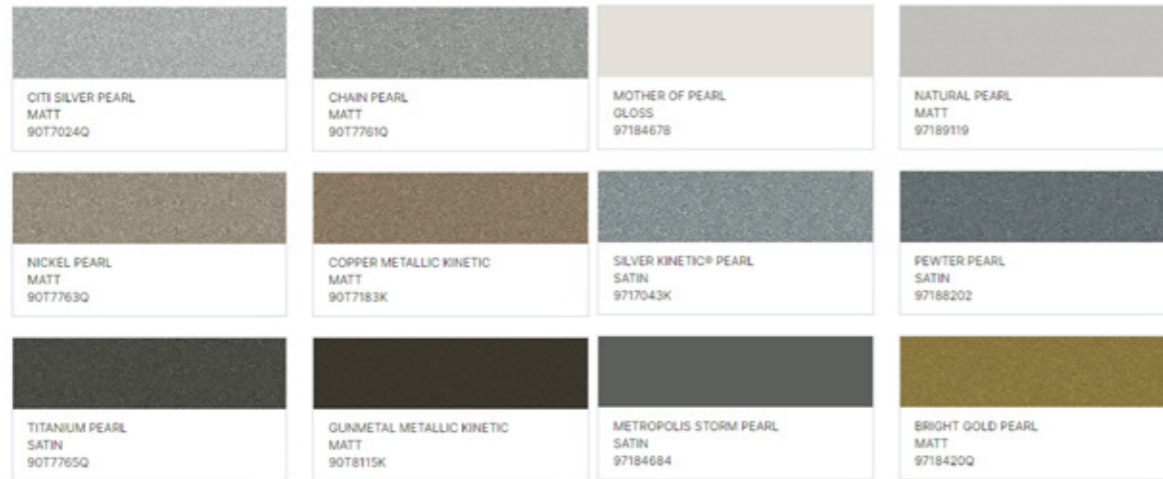


# INTERIOR OPTIONS // FINISHES

## Dulux Finishes

Shotton Lifts Standard range of Car Interiors are suitable for both residential and commercial applications requiring a functional design incorporating modern styling and durable surfaces for easy maintenance.

### DULUX COLOUR RANGE



Please ask our sales representative about standard and premium colour ranges.



Please visit [www.dulux.com.au](http://www.dulux.com.au) to view the full Dulux AUST range

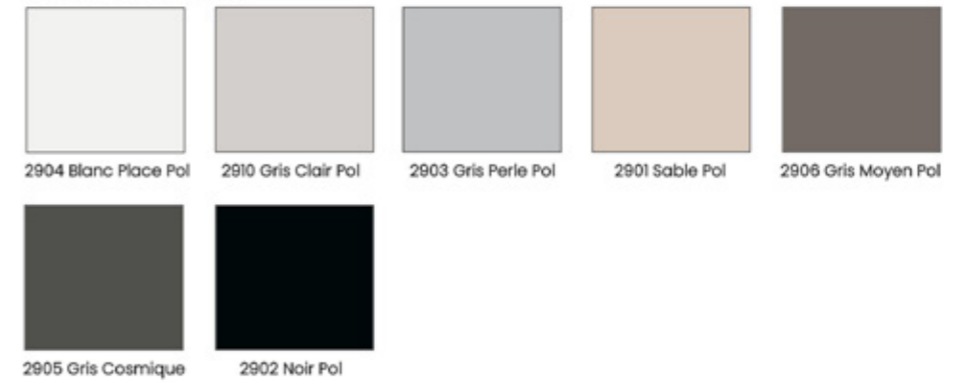
# INTERIOR OPTIONS // FINISHES

## Laminates

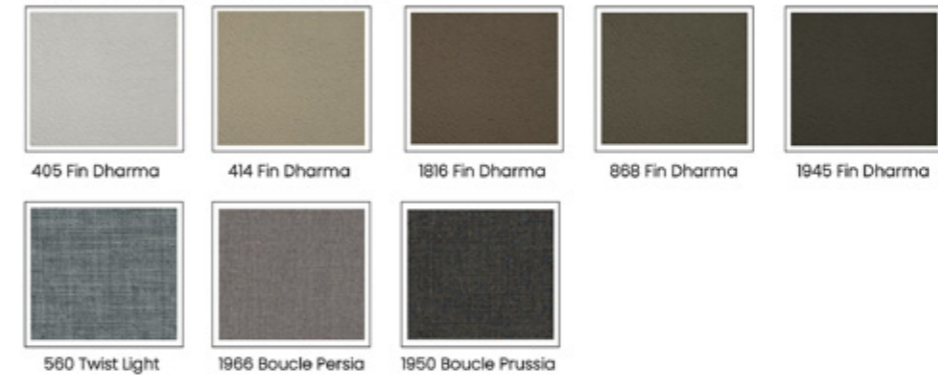
Shotton Lifts Laminate range of Car Interiors incorporate the exclusive range of Abet Laminati finishing providing modern styling and durable surfaces for easy maintenance.

### ABET LAMINATI TEXTURED RANGE

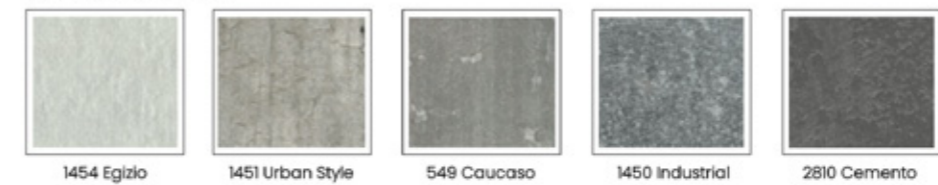
#### POLARIS LAMINATES



#### TEXTURED MATERIAL LAMINATES



#### STONE LAMINATES



#### TIMBER LAMINATES



Please visit [www.abetlaminati.com](http://www.abetlaminati.com) and select Australia only, to view the full ABET Laminati range.



# INTERIOR OPTIONS // OTHER ALTERNATIVES

## Entry Level Car Finish



## Premium Level Car Finish



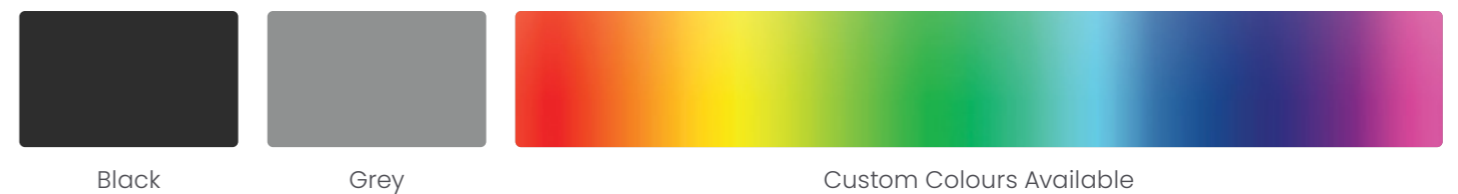
## Home Basic



## Deluxe Solutions



## Extrusion Colour Options

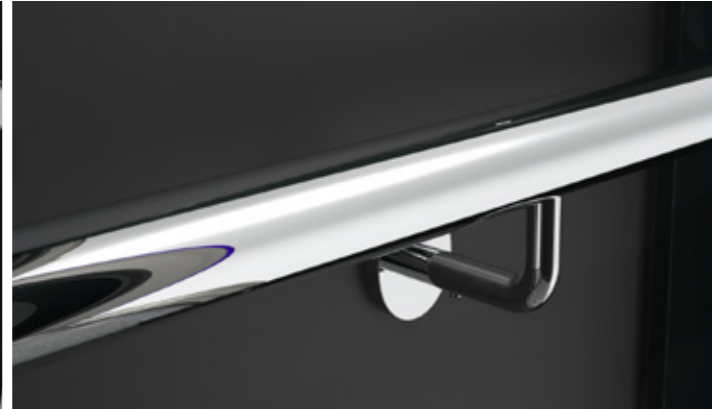


# INTERIOR OPTIONS

## Handrails



OPTIONAL BRUSHED STAINLESS STEEL HANDRAIL



OPTIONAL MIRROR STAINLESS STEEL HANDRAIL

## Ceiling Options



STAINLESS STEEL MIRROR FINISH



STAINLESS STEEL BRUSHED FINISH

## Lighting Options

STANDARD



2 LED Downlights 4 LED Downlights

OPTIONAL



LED Strip  
Warm & Cool White  
options available

# INTERIORS Car operating panels & Landing operating panels

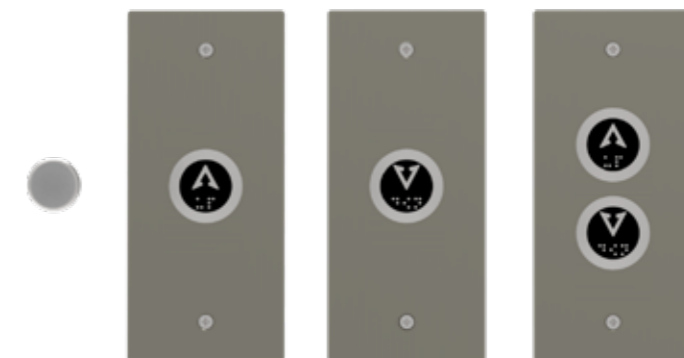
## Car Operating Panels



COP's now standard with Flush Mount Phone systems.



## Landing operating panels



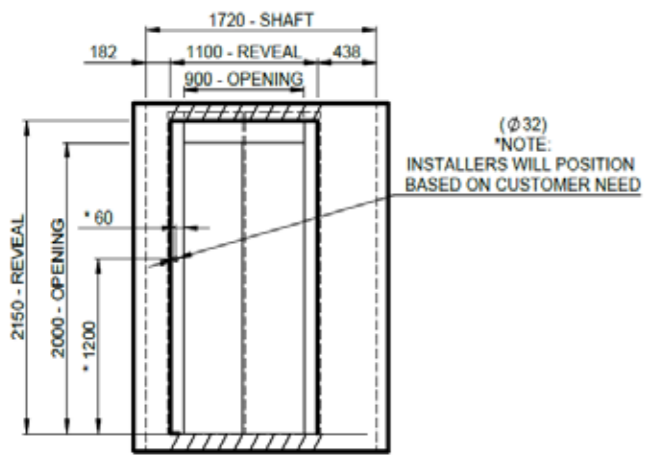
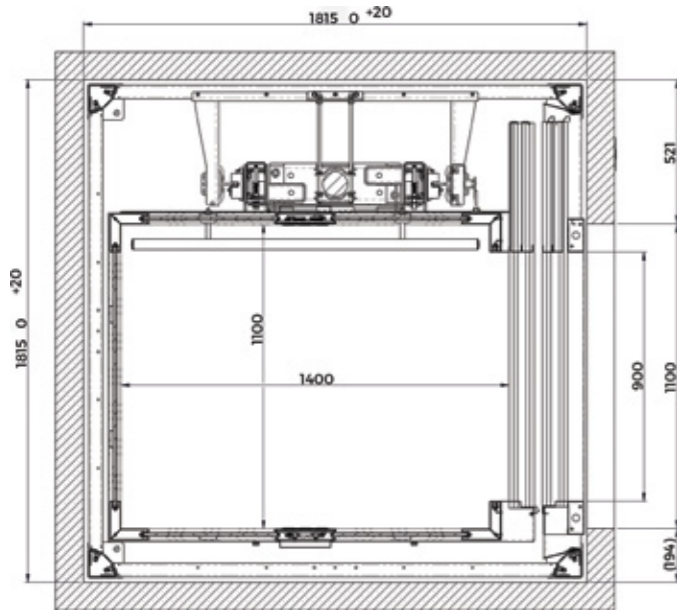


# AUTOMATIC DOORS

Automatic side opening and closing 2 panel sliding doors, that can be supplied Fire rated. Available in brushed stainless steel as standard and available in a glazed door as an option.

*NOTE: Glazed option requires longer lead times.*

*NOTE: Glazed option requires longer lead time and is NOT fire rated.*



BALMORAL Door Opening cutout dimensions



# SWING DOORS

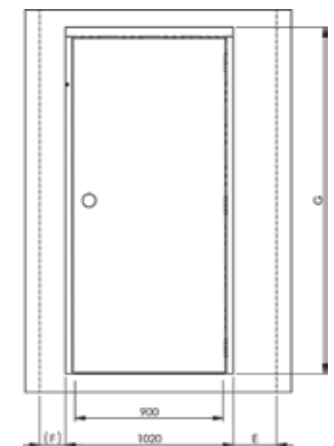
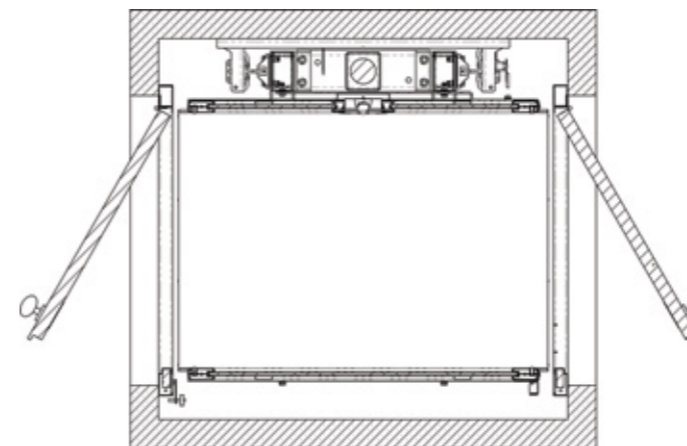
Locally produced timber doors in a **wide range of styles**. Match your other doors or contrast with a full timber grain or glass panel. Consult Shotton Lifts for pricing options. Flat panel MDF doors are Standard with features such as glass, timber grain are options. Door heights are Standard 2040mm and option 2340mm available.



Left Hand Hinge Door

Right Hand Hinge Door

Available styles may change in line with updates made by door manufacturer



Standard door heights (G) are 2040 (optional: 2340mm available)

# HARDWARE CABINET

Designed to house the lift hydraulic power pack and additional electronics, our Hardware Cabinet has a small footprint allowing it to be easily and remotely concealed within a structure, whilst minimising sound from lift operation.

NOTES:

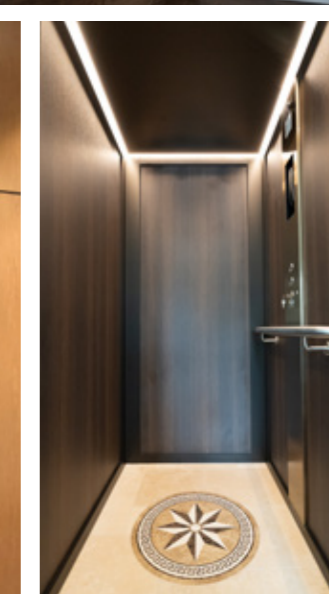
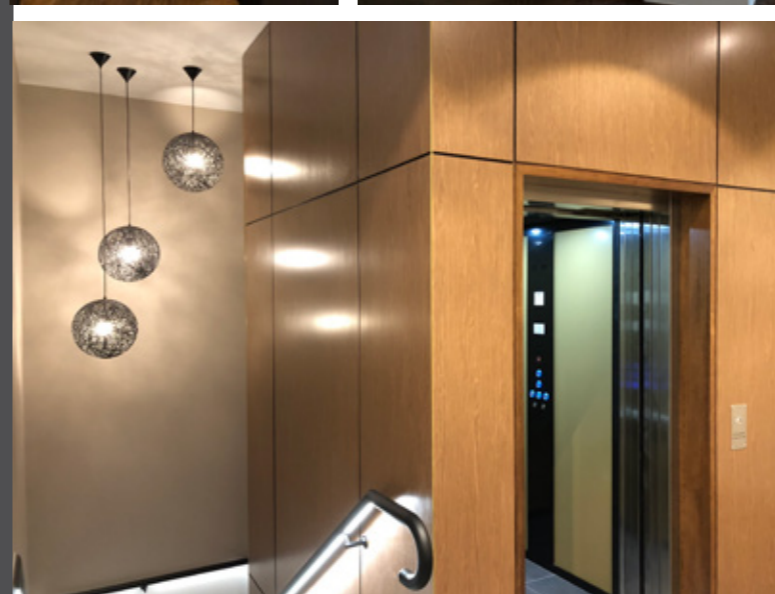
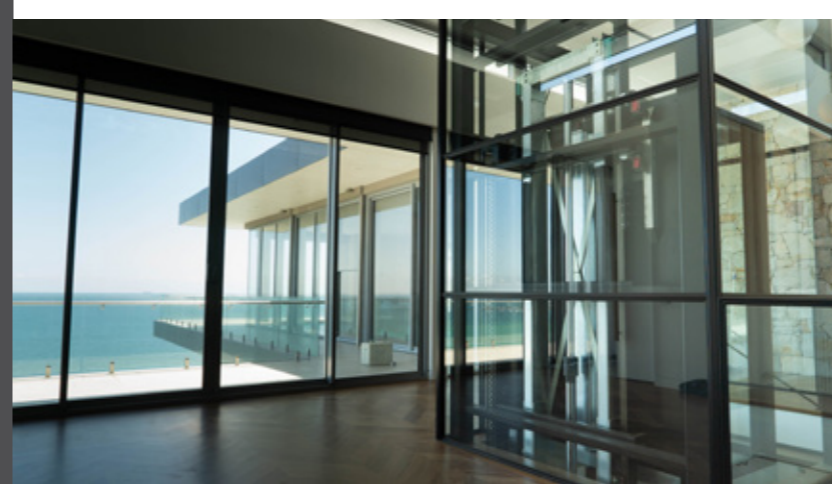
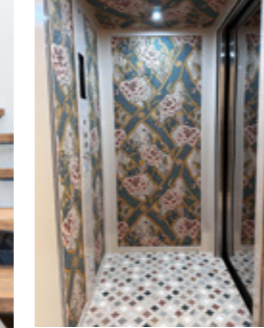
1. Cabinet has LHS and RHS door options available.
2. Cabinet must be installed internally.
3. Cabinet must be installed with sufficient clearances as per ASI735.1.2 - Section 5.2.6.3.2.1
4. Standard cabinet placement is 3 metres from lift, options for additional distance are available.
5. Cabinet must be placed on the lowest level.





# Featured PROJECTS

Residential | Quality | Commercial | Luxury | Australian Made | Inspired





# BENEFITS OF AN ENGINEERED TOWER

When opting to install an elevator in either a residential or commercial property, our Engineered Tower can provide an alternative, flexible solution instead of having to rely on a structural wall being present to mount the lift to.

The Tower's flexibility, allows an Architect, Builder or Home Owner, an opportunity to locate the lift more freely within their building or home, thus granting better flow, accessibility and convenience within the structure. Typically, the client feedback we receive indicates, that when a suitable, pre-existing structural wall isn't available for an elevator installation, using an Engineered Tower in place of building a new structural wall, is usually around 30% of what the new wall cost would have been.

For increased peace of mind, the Tower structure is an Australian designed, tested and manufactured product, that is fabricated from folded high quality steel sections that are then assembled to form a completed tower.

For further details on how an Engineered Tower could assist you in your project, please contact our sales team.



Assembled Engineered Tower with lift.

Lift installation using a traditional structural wall..

# WELL PLAN DIMENSIONS

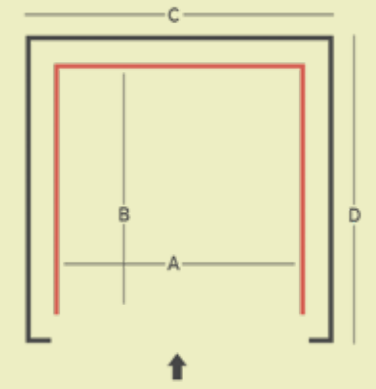
Lift Car Type	Tower/Towerless	Lift Car		Void	
		A	B	C	D
BANKSIA Compact	Tower Towerless	900 900	850 850	1330 1200	1265 1200
BANKSIA Single Entry	Towerless	900	1300	1440	1520
	Towerless	900	1300	1360	1455
	Towerless	1000	1300	1540	1520
BANKSIA Thru Car	Towerless	1000	1300	1460	1470
	Towerless	1100	1400	1640	1555
	Towerless	1100	1400	1560	1470
BANKSIA Corner Car	Towerless	1000	1300	1490	1520
	Towerless	N/A	N/A	N/A	N/A
BANKSIA Rear Cylinder	Towerless	1100	1400	1590	1620
	Towerless	N/A	N/A	N/A	N/A
	Towerless	900	1300	Contact Sales For Dimensions	Contact Sales For Dimensions
	Towerless	1000	1300	Contact Sales For Dimensions	Contact Sales For Dimensions
	Towerless	1100	1400	Contact Sales For Dimensions	Contact Sales For Dimensions

Custom Sizes Available

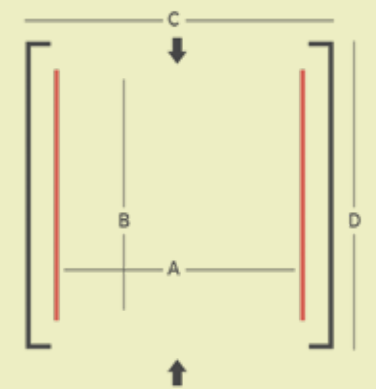
Lift Car Type	Tower/Towerless	Lift Car		Void	
		A	B	C	D
BALMORAL Single Entry	Tower Towerless	1100 1100	1400 1400	1815 1720	1815 1750
BALMORAL Thru Car	Tower Towerless	1100 1100	1400 1400	1815 1720	1980 1950
BALMORAL Corner Car	Tower Towerless	1100 N/A	1400 N/A	1975 N/A	1835 N/A
BALMORAL Rear Cylinder	Tower Towerless	1400 1400	1100 1100	Contact Sales For Dimensions	Contact Sales For Dimensions

Custom Sizes Available

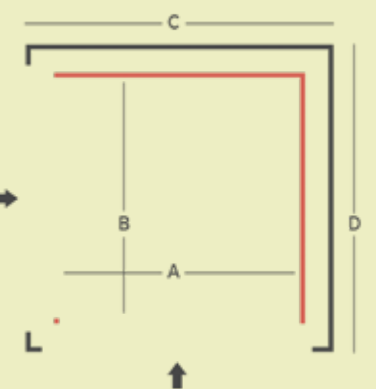
# CAR TYPES



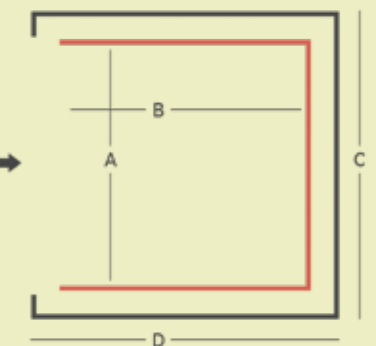
**SINGLE ENTRY**



**THROUGH CAR**



**CORNER CAR**

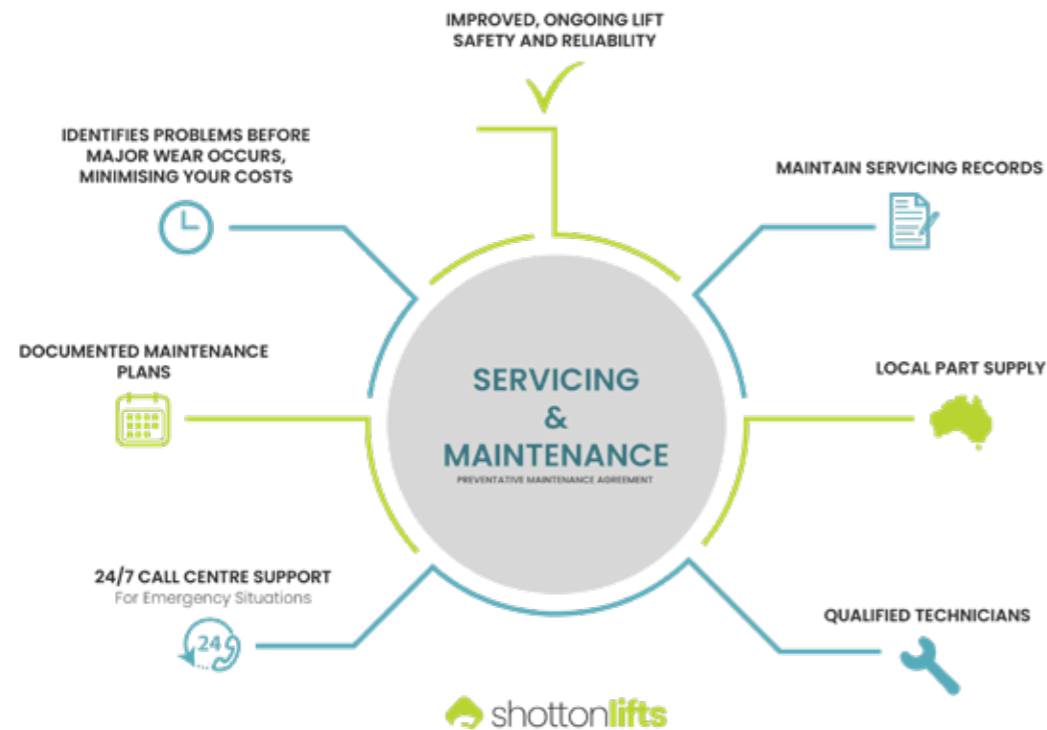


**REAR CYLINDER**

# LIFT SERVICING

All lifts require specialised servicing and maintenance. Our agreements include a set number of calls over a 12 month period which will include a documented service checklist of inspection and safety checks.

Minimum Standards exist for regular maintenance of lifts in Australia. Contact your Shotton Lifts consultant for more information. Shotton Lifts provides service maintenance plans designed to optimise serviceability and life of your lift.



# designed & MANUFACTURED in Australia

**Shotton Lifts design, engineer, manufacture, sell, install and service their lifts, locally, in Australia. Dealing direct means your needs are communicated directly back to the engineers and factory floor ensuring your lift is delivered on time, to your specifications and meets local regulatory requirements and safety standards. Installation onsite is carried out by Shotton Lifts and, rest assured, Shotton Lifts will be there years after to service and maintain your lift.**



## Important factors you should be aware of when considering servicing of your lift

### Safety checks significantly reduce the chance of injury

Your lift, just like a car, has many parts that need to run harmoniously together for it to work safely or at all. Your lift, if supplied by Shotton Lifts Australia, will have been supplied to you built to the highest quality to meet Australian Safety standards. Over time there is a chance that integral parts will deteriorate if not serviced and maintained as required. As part of our standard service, a list of safety checks is carried out that are designed to find potential faults. This leaves you with the peace of mind that your lift will run as intended.

### All our service plans are tailored individually for every client

Nearly every lift has different usage and situations which can significantly vary the level of service and safety check requirements. We take all these things into consideration when developing your tailored service agreement removing any unnecessary costs and wasted time resulting in a service agreement that reflects your needs exactly and keep costs to a minimum.

### Peace of mind

After each service a detailed report is issued to advise you of the overall condition of the lift and as time goes on, any parts that are likely to need replacement or repair on future services. If our technician feels that the issue needs to be rectified immediately be assured that it must be important and well worth getting it fixed immediately. Either way we will do our best to ensure there are no nasty surprises when it comes to completing your next service.

### Convenience

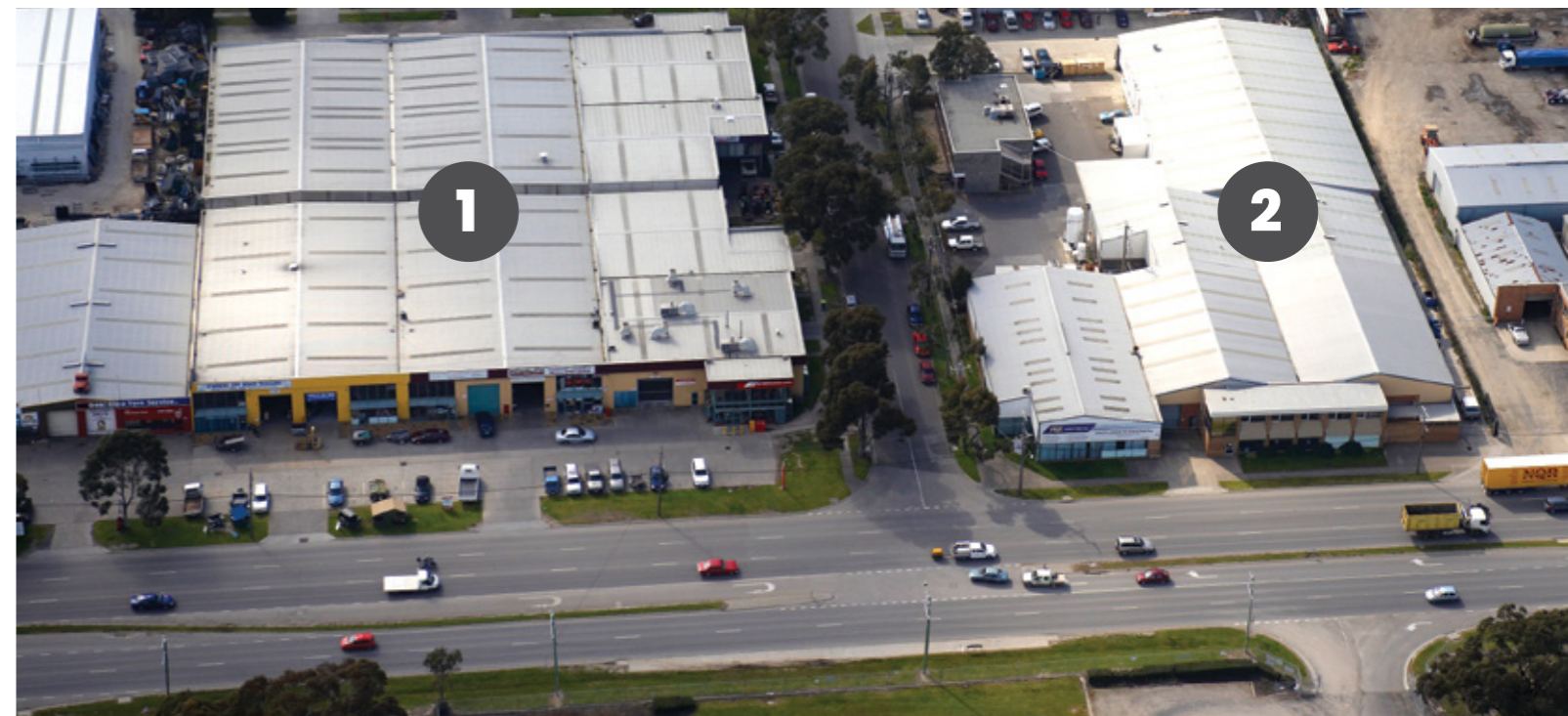
As part of programmed servicing we notify you of when each service is due and arrange a convenient time to carry out the works. We have worked very hard to ensure what we offer to you is real value for money to give you many years of trouble free use of your lift.

Shotton Lifts' manufacturing facility covers more than 7000 m<sup>2</sup> of space including design and engineering offices, project management, manufacturing, logistics and warehousing capabilities. This, combined with the Installation and Service teams, provides you with a secure choice in a Lift supplier.

Shotton Group has 6 facilities spread across more than 7,000 square meters in Dandenong South, Victoria and Queensland

1. Shotton Lifts Show Room

2. Shotton Lifts Manufacturing







# shottonlifts

AUSTRALIAN OWNED AND MANUFACTURED



*DISCLAIMER: Shotton Group Pty Ltd trading as Shotton Lifts offers this brochure as a general guide. Photographs and illustrations in this brochure are for illustrative purposes only and do not necessarily represent actual product models. All information and specifications contained in this brochure are based on the latest product information available at time of publication.*

*Shotton Lifts reserves the right to make changes at any time, without notice in colours, materials, equipment, specifications, models & warranty.*

*The specification and options stated in this brochure are for reference only.*

*Colours may differ slightly from those shown in the brochure, owing to the limitations of the printing process.*

*NOTE: Specifications may change at any time without prior notice. Please consult your Shotton Lifts Sales Consultant for up to date information on products. Products displayed in this brochure are available at the time of printing of this brochure. New products may replace the products in this brochure.*

*PRINTED: Q1 2021. Copyright: Shotton Group Pty Ltd T/A Shotton Lifts.*

MANUFACTURING SINCE 1977 | WE BUILD LIFTS THAT LAST | MANUFACTURED IN AUSTRALIA



## Victoria Sales Office & Showroom

Unit 3 / 147 Greens Road Dandenong South VIC 3175

Phone: **03 8725 1025**

Email Sales: [sales@shottonlifts.com.au](mailto:sales@shottonlifts.com.au)

Email Service: [service@shottonlifts.com.au](mailto:service@shottonlifts.com.au)

## Queensland Sales Office

Unit 21 / 26 Octal Street Yatala QLD 4207

Phone: **07 2140 2065**

Email Sales: [salesqld@shottonlifts.com.au](mailto:salesqld@shottonlifts.com.au)

Email Service: [service@shottonlifts.com.au](mailto:service@shottonlifts.com.au)

## NSW Sales Office

Phone: **02 9057 9050**

Email Sales: [salesnsw@shottonlifts.com.au](mailto:salesnsw@shottonlifts.com.au)

Email Service: [service@shottonlifts.com.au](mailto:service@shottonlifts.com.au)

## Head Office & Manufacturing

139-145 Greens Road Dandenong South VIC 3175

## SHOTTON LIFTS

A division of Shotton Group Pty Ltd

[www.shottonlifts.com.au](http://www.shottonlifts.com.au)

Find us on



FS 605209

Management System  
Certified to ISO 9001